

KOMATSU®

XT460L-3

XT460L



Photos may include optional equipment.

PEAK HORSEPOWER

300 HP @ 2000 rpm
224 kW @ 2000 rpm

OPERATING WEIGHT

74,320 lb
33,710 kg

SWING TORQUE

58,400 lb-ft
79.1 k/Nm

WALK-AROUND

XT460L-3



Photos may include optional equipment.

PEAK HORSEPOWER

300 HP @ 2000 rpm
224 kW @ 2000 rpm

OPERATING WEIGHT

74,320 lb
33,710 kg

SWING TORQUE

58,400 lb-ft
79.1 k/Nm

The Komatsu XT460L-3 boasts a modern forestry cab that features a state-of-the-art control system and superior ergonomics. Combined with high lift capacity, powerful swing torque, and a robust Komatsu undercarriage the XT460L-3 delivers high productivity, reliability and durability.

New XT-3 Forestry Cab Ergonomics: The XT-3 Series forestry cab was designed and engineered with a total focus on "Attention to the Details". Large windows and skylight deliver a commanding "widescreen" view in all directions; the state-of-the-art "1st in the Forest" IQAN-MD4 Programmable Digital Control System provides a high-tech, but easy-to-use Operator "Command Central"; and a long list of Cab Standard Features ensure the operator of having high levels of comfort and ergonomics.

IQAN-MD4 Programmable Digital Control System

Easy-to-use IQAN-MD4 digital control system with 7" LED color touchscreen provides smooth machine performance for felling or harvesting configurations. Built-in machine protection systems have active self diagnostics and troubleshooting capability. Joy stick controls are adjustable and programmable allowing operators the flexibility to fine tune their own machine response characteristics.

Versatile Application Flexibility

- 8 hydraulic system options
- 2 boom options: 14'2" (4,318 mm) and 16'1" (4,902 mm)
- 2 arm options: Feller Buncher and Harvester
- 3 Bar Saw and 5 High Speed Disc Saw options

Exceptional Maneuverability

Nothing matches the XT460L-3's maneuverability and ability to work in tight areas. Komatsu's setback boom allows the operator to cut closer to the tracks. Multiple boom and arm options provide a wide cutting swath. Zero tail swing design and closed loop independent track drive make this machine easy to get around in dense forest conditions.

4-Way Leveling System

The heavy duty 2-cylinder leveling system provides simultaneous 4-way front/rear/side leveling to maximize slope productivity.

Closed Loop Track Drive With Dedicated Pumps

Nothing performs like Komatsu's closed loop track drive design. The XT460L-3 can simultaneously travel, reach, cut, and swing without compromising power between travel and work tools.



Rugged Komatsu Undercarriage Components

- Large Komatsu final drives
- Komatsu 9" (230 mm) pitch grease sealed track
- Robust track roller guards with track shoe supports
- Large track roller debris openings
- Choice of track sliders or carrier rollers

Powerful Low Emission Engine

A powerful Cummins 300hp Tier 3 engine delivers excellent hydraulic performance and fuel economy. An auto-reversing fan helps keep the radiator free of debris. An auxiliary hydraulic oil cooler with temperature controlled fan cools only when needed saving horsepower and fuel.

Easy Maintenance

- Remote mounted engine oil filter
- Electric hydraulic system refill pump
- Electric hydraulic tank vacuum pump prevents spilling oil while performing system maintenance
- IQAN-MD4 system continually monitors all machine functions
- Swing-out doors with rugged triple hinges and lever latches for excellent component access

Transport Height Below 14'6" (4.42 m)

The XT460L-3 transport height is below 14'6" (4.42 m) when using a double drop lowboy RGN 2-3 axle trailer with 18"-22"-24" drops.

WORKING ENVIRONMENT

**WIDESCREEN
WORK ENVIRONMENT**

Photos may include optional equipment.





“Attention to the Details” Engineered Forestry Cab
Komatsu's next generation XT-3 Series Cab offers the maximum in visibility, operator comfort & convenience, ease of operation, easy-to-use high technology, productivity, and fit & finish - placing the XT-3 Cab at the top of its class.

WORKING ENVIRONMENT

XT460L-3



Photos may include optional equipment.

Engineered Forestry Cab

The XT-3 Cab layout is ergonomically efficient, spacious, and quieter. Its sloped roofline provides excellent headroom above and forward of the seat. Large front, side and skylight windows provide superior visibility and a commanding “widescreen” work view. Eleven (11) brilliant white LED lights provide dramatic wide area illumination.

The XT-3 is equipped with the latest state-of-the art IQAN-MD4 Programmable Digital Control System— a “1st in the Forest” technology for track forest machines, making it among the most technologically advanced.

Operator Comfort & Convenience

- Six (6) multi-level fully adjustable vents provide full cabin airflow for the AC/Heat/Defroster system
- Cab is pressurized with fresh air flow from all six (6) vents when in AC/Heat mode
- All switches and controls are located within easy reach of the operator
- All gauges and warning light functions are prominently displayed on the large 7" LED IQAN-MD4 color touchscreen
- AM/FM/Weather Band stereo radio w/iPod/MP3 input
- Two (2) 12-volt outlets available for powering electronic devices
- Adjustable-width cellphone holder
- Fold down/up cupholder
- Five (5) pre-threaded welded bosses for mounting auxiliary electronics
- Bright LED overhead dome light
- Stanley® insulated vacuum bottle & lunch box cooler
- Magnetic & moveable coat hook
- Literature box & fire extinguisher are accessible while seated
- Floor mat is easily removed for cleaning
- 3 emergency escape routes: front window, right door & roof hatch
- Low exterior door handle provides easy entry access

Visibility

- Large front, side and skylight polycarbonate windows allow for a commanding "widescreen" view of the work area
- A full floor-to-ceiling, 1.25" (32 mm) polycarbonate front window provides an unobstructed view
- Large skylight window with a retractable sunshade provides a clear, wide and deep view of the boom and tree tops
- Eleven (11) exterior LED lights provide 2-3 times more brilliant work area illumination than halogen; all are recessed for protection
- Low door handle position improves operator’s view to right-side of machine

Standard Equipment

Dash Panel with IQAN-MD4 Display



Skylight and Sunshade



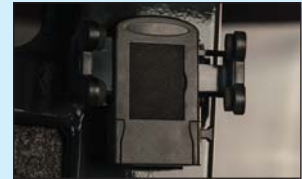
11 Brilliant LED Lights



AM/FM/Weather Band Stereo



Cellphone Holder



Insulated Bottle & Cooler



Fold-down/up Cupholder



Bright LED Dome Light



Removeable Floormat



Fire Extinguisher

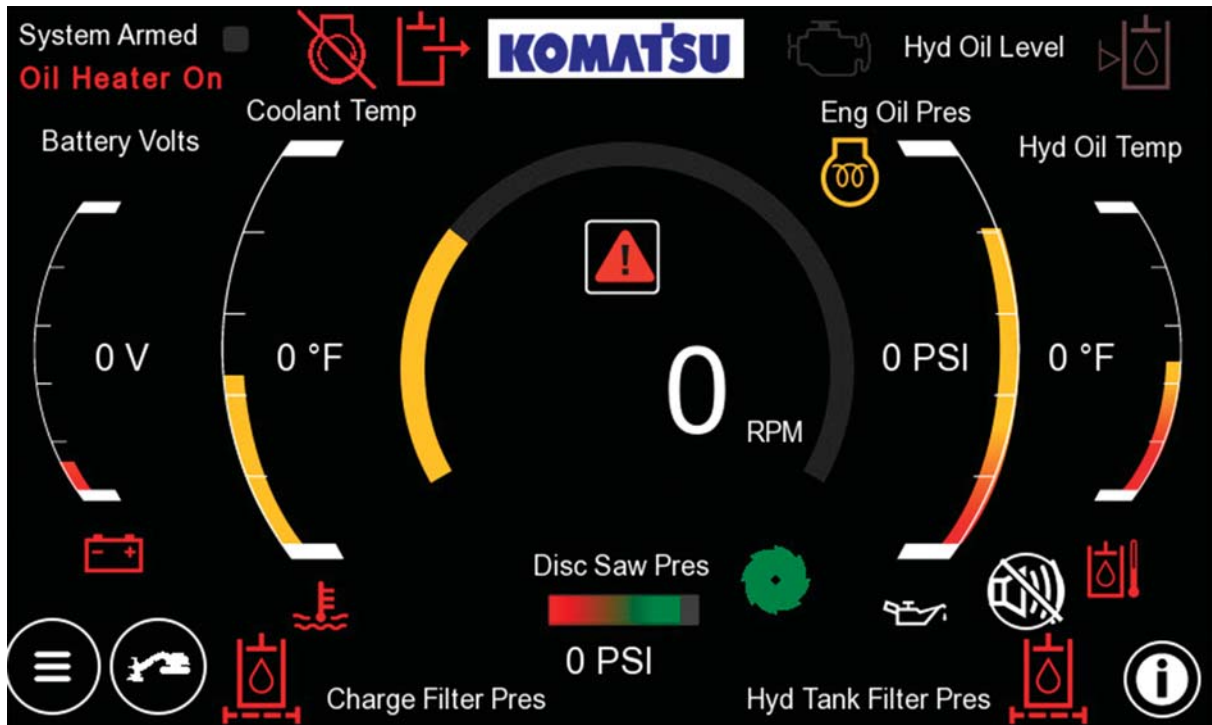


Roof Escape Hatch



IQAN-MD4 DIGITAL CONTROL SYSTEM

XT460L-3



System Overview

- The IQAN-MD4 programmable digital control system is "1st in the Forest" state-of-the-art technology
- IQAN-MD4 display provides the operator with a true "Command Central" control system
- Rugged 7" (18 cm) LED color touchscreen monitor provides the operator with:
 - Sensitive finger touch response
 - Excellent viewing in all lighting conditions
 - Wide 170° viewing angle
 - All gauges and warning light functions are displayed digitally
- "Highly intuitive" Komatsu programming makes operation and system navigation easy

Dual Electronic Gauges & Warning Icons

The IQAN-MD4 system continuously monitors and displays the following machine functions in both Electronic Gauge and Warning Lamp Icon formats:

- Tachometer (RPM)
- Engine Coolant Temperature

- Engine Oil Pressure
- Battery Voltage
- Hydraulic Oil Temperature
- Disc Saw Pressure

Electronic Warning Icons

The IQAN-MD4 system continuously monitors and will display a red Warning Lamp Icon when appropriate for the following functions:

- Check Engine
- Hydraulic oil level
- Hydraulic tank filter pressure
- Charge filter pressure
- Vacuum pump "On"

Programmability & Adjustability

The IQAN-MD4 can be programmed (adjusted) to accommodate up to 3 (three) different operators for many different machine parameters including: joystick and foot pedal operational sensitivities, boom, stick tool tilt, swing, cab leveling, clamp, accumulator and lateral tilt.

MAINTENANCE FEATURES

SERVICE ACCESS

Three (3) rugged swing-out service doors, featuring triple-hinged and positive dove-tailed lever latch designs, provide convenient service access.

Daily engine service points, batteries, fuel filters, water separator and cold weather starting options are all located behind a large perforated swing-out door that completely exposes the left side of the engine. Standard service light provides illumination when servicing at night.

The pump drive and all hydraulic pumps are easily reached through a large swing-out door. There is plenty of room to work in this compartment, even with larger tools. All hydraulic pressure checkpoints are found in one area for convenience.

The control valve and all hoses to the boom are fully visible under a large swing-out guard. Hose routing is "clean" and in full view. All connections are easy to reach and service.

Major oil lines out of the hydraulic tank have quick shut-off valves.

Large swing-out hydraulic oil cooler with an on demand thermostatically-controlled fan offers easy service access and keeps oil cool in the toughest of conditions. The engine oil filter is also located in this area.

A large hood with gas struts provides access to the carbody area with a lockable tool box and ample storage. Grouped leveling system lube fittings are easy to reach and service.

Ground level fuel tank access provides easy and convenient refueling.



Photos may include optional equipment.

PERFORMANCE & RELIABILITY FEATURES

Hydraulic System

All Komatsu XT machines have a load sensing, pressure-compensated hydraulic systems for better efficiency, smooth operation, and cooler running hydraulic system.



Large 100 gal. (379 liters) capacity hydraulic oil tank keeps return oil cool, internal baffles help minimize aeration.

Three separate return filters ensure clean oil and prevent high back pressures in the pump and motor case drains.

All pumps have individual suction lines with strainers located in different areas of the reservoir to minimize cavitation problems that can result when all suction lines originate from one manifold. This design also facilitates oil pick-up on steep slopes. The implement pump features heavy duty bearings for longer service life.



8 hydraulic systems give the XT460L-3 tremendous flexibility to pin on a wide range of cutting attachments.

An optional pump drive cooler helps prolong hydraulic pump drive gear box life.

24V hydraulic oil refill pump is standard equipment.

Standard 24V hydraulic oil tank vacuum pump helps prevent oil spills and keep the machine clean when changing hoses or servicing the hydraulic system.

All service doors feature rugged triple-hinges and lever latches.

Closed Loop Track Drive

Nothing performs like Komatsu's closed loop track drive system. The XT460L-3 can simultaneously travel, reach, cut, and swing without compromising power between travel and work tools.



Separate track drive pumps assure travel power is always available regardless of other functions being used.

2-Cylinder, 4-Way Leveling

Komatsu's 2-cylinder leveling system puts the cylinders at the rear-most outside corners where leverage and stability are greatest. Simultaneous front/rear/side leveling helps increase production and maximize operator comfort while working on slopes.

Operator Environment

Large quiet ROPS/FOPS/TOPS/FOG/OPS/WCB/Oregon OSHA certified cab with an adjustable high back operator seat.

High capacity heater, A/C and defroster provide a comfortable operator climate regardless of season.

IQAN-MD4 control provides ability to custom tune vehicle response to meet individual operator preferences.

Floor-to-ceiling 1.25" (32 mm) polycarbonate front window with no bars.

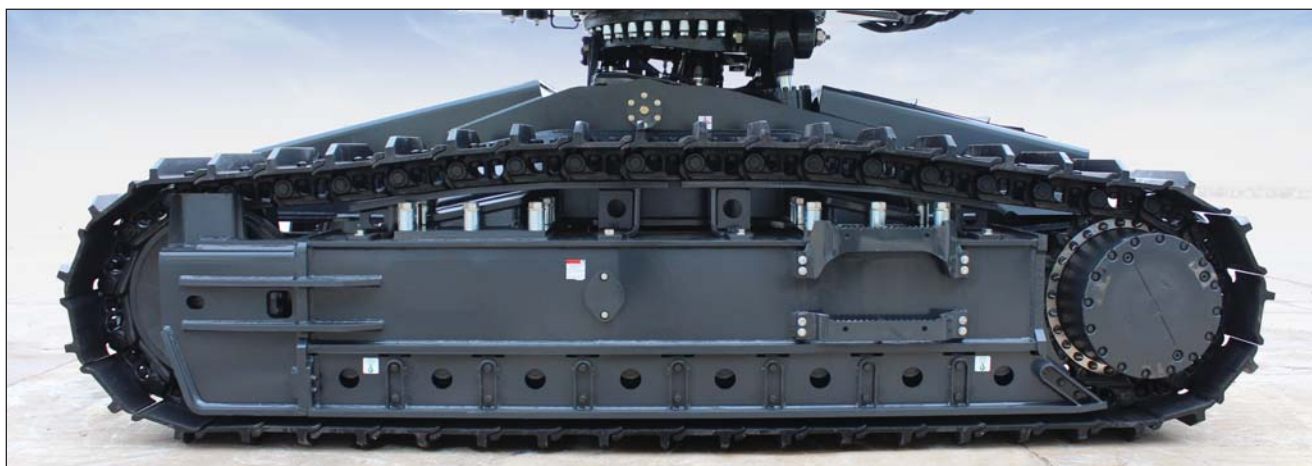
Large polycarbonate skylight provides clear, wide and deep upward vision for a clear view of tree tops.

Eleven (11) brilliant LED lights provide excellent wide area illumination; all are recessed for protection.



Optional KAB seat shown

XT460L-3



Rugged Komatsu Undercarriage with 8 Large Capacity Rollers; Choice of Track Sliders or Carrier Rollers

Powerful Swing Motor

Standard 56cc swing motor provides 58,400 lb-ft of swing torque for the most demanding conditions.

Rugged Undercarriage

- Large Komatsu final drives
- Komatsu 9" (230 mm) pitch grease sealed track
- 8 large capacity rollers provide excellent track chain support and roller load distribution
- High tensile strength steel chain guide (rock guard) material for durability
- Track chain alignment optimized with
 - Extended chain guard profiles at both idler and sprocket
 - Continuous straight-line chain guide (rock guard)
- Track guards are removable for easy roller service access
- Flat carbody underside minimizes hang ups on stumps and rocks
- Leveling cylinders are protected inside carbody



Extended Chain Guard Profiles



Large Komatsu Final Drives



Heavy Duty Swing Bearing



Heavy Duty 4-Way Leveling

Photos may include optional equipment.

KOMATSU PARTS & SERVICE SUPPORT

Komatsu Parts Support

- 24/7/365 to fulfill your parts needs
- 9 parts Distribution Centers strategically located across the U.S. and Canada
- Distributor network of more than 300 locations across U.S. and Canada to serve you
- Online part ordering through Komatsu eParts
- Remanufactured components with same-as-new warranties at a significant cost reduction

Komatsu ProAct – Optional Extended Parts Warranty Coverage

All Komatsu XT-3 track machines come with Komatsu's Exclusive Limited Warranty with Remedy and Liability, which is in effect for twelve (12) months from the date of delivery or 2,000 hours of use, whichever occurs first. Delivery occurs when the first purchaser/user takes physical possession of the product.

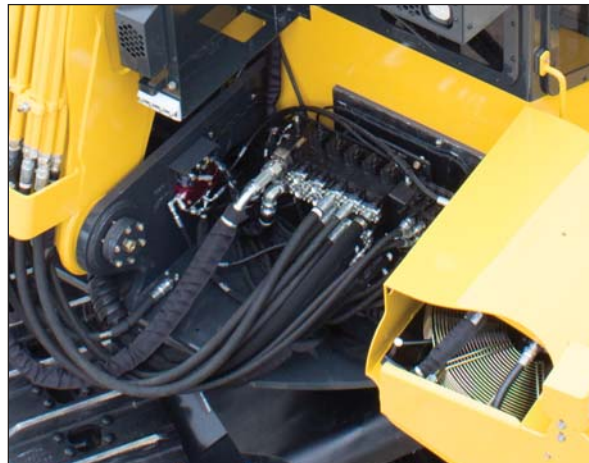
Komatsu ProAct is an optional after sales-service program designed to promote the well-being of your forest machine through preventative maintenance. The program helps identify and correct problems by conducting tests and machine inspections on a regular basis. The hydraulic oil is analyzed and all vital parts are inspected. This means that aging components can be changed just when they are approaching the end of their useful life – not too early and not too late.



The Komatsu ProAct program takes over when the standard warranty ends and provides parts warranty on selected vital components in accordance with the ProAct Program. As a bonus, the customer will get a historical machine record that further increases the second-hand value of their forest machines.

Komatsu ProAct 1 may be purchased by the customer upfront or anytime during the period the new machine warranty coverage is in effect. Purchase of the program and compliance with the required hydraulic oil sampling test and machine inspections will result in program coverage of specified components for 24 months from the date of the machine delivery or 4,000 total hours of use, whichever occurs first. A Komatsu ProAct 2 program providing additional extended coverage is also available for purchase.

See your local Komatsu Forestry distributor for further ProAct details.





Photos may include optional equipment.

SPECIFICATIONS

XT460L-3



ENGINE

Model.....Cummins QSC, Tier3
 Type.....Water-cooled, 4-cycle, direct injection
 Aspiration.....Turbocharged and charge air cooled
 Number of cylinders.....In-line, 6-cylinder
 Bore.....4.49" 114 mm
 Stroke.....5.31" 135 mm
 Piston displacement.....505 in³ 8.3 ltr
 Horsepower:
 Peak.....300 HP 224 kW @ 2000 rpm
 Rated.....280 HP 209 kW @ 2200 rpm
 Peak torque.....1000 lb-ft (1356 Nm) @1500 rpm
 Cooling system.....Side-by-side aluminum core type, engine coolant and charge air



ELECTRICAL SYSTEM

Type.....24V with master disconnect
 Alternator.....24V, 75A
 Work lights.....11 - LED lights



HYDRAULICS

Implement pump.....Variable displacement piston.
 Maxflow.....91 GPM (344 liter/min)
 Track drive pump.....2-Variable displacement piston pump.
 Max flow.....57 GPM (216 liter/min)
 Auxiliary pumps (Depending on hydraulic system selection)
 45cc.....28 GPM (106 liter/min)
 71cc.....45 GPM (170 liter/min)
 Travel motor.....2 - Variable displacement piston
 Swing motor.....Fixed displacement bent axis piston
 Cooling.....Separate swing-out cooler with thermostatically controlled fan



DRIVES AND BRAKES

Drive method.....Hydrostatic, independent closed loop
 Steering control.....Foot pedals
 Max travel speed Hi.....3.3 mph / 5.3 km/h
 Max travel speed Lo.....1.3 mph / 2.1 km/h
 Max tractive effort.....74,315 lb / 33710 kg
 Service brake.....Hydraulic
 Parking brake.....Mechanical



LEVELING SYSTEM

Type.....2-cylinder, 4-way heavy duty
 Leveling angle
 Front.....25° / 47%
 Rear.....6° / 11%
 Side/Side.....18° / 32%



SWING SYSTEM

Rotation.....Continuous rotation
 Bearing.....Heavy duty, 37-bolt double row bearing
 Drive method.....Hydrostatic
 Swing speed.....0 to 8.5 rpm
 Swing torque.....58,400 lb-ft / 79.1 kNm
 Swing brake.....Hydraulic
 Parking brake.....Mechanical



UNDERCARRIAGE

Carbody.....HD boxed center frame structure with flat bottom and storage trunk
 Track frame.....Box-section, bolted
 Track type.....Grease sealed
 Number of shoe/links.....43 per side
 Bottom rollers.....8 per side
 Track Pitch.....9" (230 mm)



BOOM PERFORMANCE

Boom reach to pin
 Maximum.....21' 5" / 6530 mm
 Minimum.....7'6" / 2290 mm
 Cutting Swath (without attachment).....13' 11" / 4240 mm swing center to attachment pin
 Lifting capacity.....29,200 lb / 13245 kg @ 10' / 3.05m
 20,800 lb / 9435 kg @ 15' / 4.57m
 13,500 lb / 6123 kg @ 20' / 6.10m
 Feller buncher boom, feller buncher 4-bar arm, designed for 21-22" high speed disc saws



COOLANT & LUBRICANT CAPACITY (REFILLING)

Fuel tank.....139 US gallons / 526 liters
 Coolant.....8 US gallons / 30.3 liters
 Engine oil pan.....20 US quarts / 18.9 liters
 Final drive.....11 US quarts / 10.5 liters per side
 Swing gear box.....4.5 US quarts / 4.3 liters
 Hydraulic tank.....100 US gallons / 379 liters



OPERATING WEIGHT (APPROX LESS HEAD)

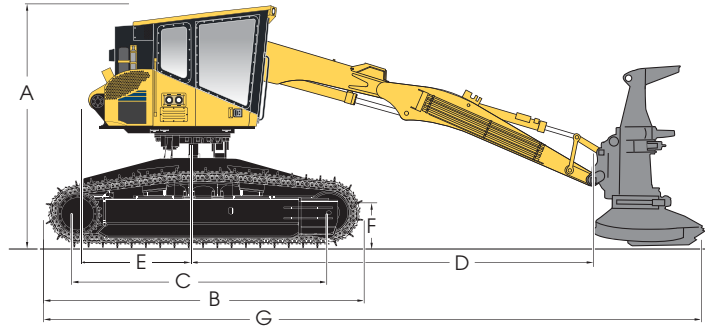
Operating weight includes standard feller buncher boom, feller buncher 4-bar arm with tool tilt, 1/2 tank of fuel, rated capacity of lubricants, coolant, operator and standard equipment.
 Cutting attachment not included.

Track Shoes	Operating Weight	Ground Pressure
SG 24" (600 mm)	74,320 lb (33710 kg)	9.7 Psi (0.68 kg/cm ²)



DIMENSIONS

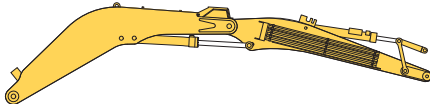
- A Height 12'8" . . .3861 mm
- Overall Shipping Height (cab tilted) 12'5" . . .3785 mm
- B Overall track length 15'8" . . .4770 mm
- C Track length
(Idler center to sprocket center) 12'0" . . .3665 mm
- D Max boom - center of swing to pin 21'5" . . .6530 mm
- E Tail swing radius 5'7" . . .1690 mm
- F Ground clearance 32" . . .810 mm
- G Max reach to teeth of typical saw head . . . 26'10" . . .8180 mm
- Overall track width
w/24" 600 mm shoe 10'5" . . .3170 mm
w/28" 700 mm shoe 10'9" . . .3270 mm
- Track gauge 8'5" . . .2570 mm



*To outer most structure

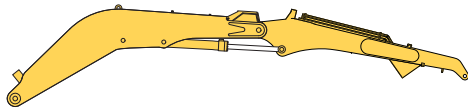


BOOM & ARM OPTIONS (REACH TO PIN, GROUND LEVEL)



Standard Boom - 4-Bar Arm

Minimum	Swath	Maximum
7'6" 2290mm	13'11" 4240mm	21'5" 6530mm

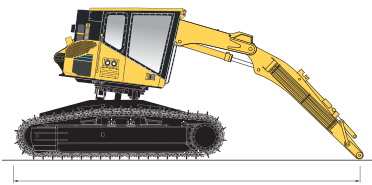


Long Boom - Droop Nose

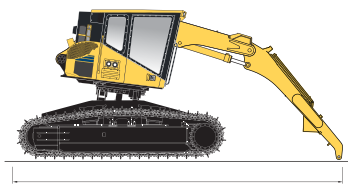
Minimum	Swath	Maximum
9'5" 2870 mm	14'8" 5050 mm	24'1" 7340 mm



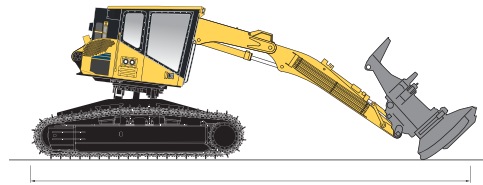
SHIPPING CONFIGURATIONS



4 Bar Arm,
Std Boom = 25'6" (7772 mm)



Harvester Arm,
2 Ext Boom = 28'11" (8814 mm)

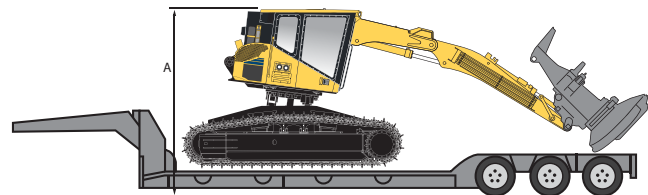


Bar Arm, Std Boom,
Typical saw head = 31'4" (9550 mm)



TRANSPORT HEIGHT (WITH DOUBLE DROP LOWBOY RGN 2 OR 3 AXLE TRAILER)

Trailer	Transport Height (A)
18" Trailer	13'-11" (4242 mm)
22" Trailer	14'-3" (4343 mm)
24" Trailer	14'-5" (4394 mm)





STANDARD EQUIPMENT

- Alternator, 75 ampere, 24V
- Air cleaner, dry type with air intake pre-cleaner
- Automatic air conditioner, heater & defroster with pressurization and 6 adjustable vents
- Back up alarm
- Batteries, 2 x 12V, 950 AH
- Cab, ROPS/FOPS/TOPS/ FOG/OPS/WCB/Oregon OSHA certified
- Cab:
 - 2 -12V Outlets
 - Cellphone holder, adjustable
 - Coat hook, magnetic and moveable
 - Cupholder, fold-down/up
 - Literature box with cover
 - Lockable door
 - Stanley® vacuum bottle & lunch box cooler
 - Ventilation fan
- Carbody, wide 8'5" gauge, 10'5" (3170mm) overall width. Forestry carbody with track roller frame with removable track shoe support guides. Storage trunk
- Continuous swing rotation
- Control handles, Sure Grip
- Electrical system master disconnect switch
- Electrical joystick/foot pedal controls
- Emergency escapes, 3 (front window, side door and roof hatch)
- Engine, Cummins QSC 8.3 liter, 300HP (224kW) Peak; 280HP (209kW) rated
- Engine compartment service light
- Engine interface monitoring system
- Engine fan, auto reversing with guard
- Final drives, Komatsu with spring-applied oil released track brakes
- Fire extinguisher 10 lb. hand held
- Fuel water separator
- Hydraulic system, load sensing
- Hydraulic oil cooler, auxiliary with temp sensing fan
- Hydraulic oil refill pump, 24V
- Hydraulic tank vacuum pump
- Instrument panel with switches, LED warning lights, and engine stop button
- IQAN-MD4 Digital Control System with 7" (18 cm) LED color touch screen
- Leveling, 4-way HD cab leveling
- Light, Interior dome LED
- Muffler with blanket
- Pumps:
 - Track drive - 2 x VDPP, 57 gpm (216 ltr/min)
 - Implement - 1 x VDPP, 91 gpm (344 ltr/min)
- Radiators: side-by-side aluminum core jacket water and hydraulic
- Radio - AM/FM Weather Band stereo with iPod/MP3 input jack
- Rubber debris skirt
- Seat - adjustable high back suspension
- Seat belt, 3" retractable
- Swing bearing, HD 37 bolt double row
- Swing motor, 56cc
- Track adjusters, hydraulic
- Track chain, greased sealed Komatsu 9" pitch chain, 43 links per side
- Track drive, closed loop
- Track motors, 2 speed VDPP auto shift with variable speed control
- Track rollers, 8 per side
- Track shoes, 24" (600 mm) single grouser
- Track sliders
- Travel pedals
- Windows: polycarbonate
 - Front window, 1.25" (32 mm)
 - Left & right window, 0.5" (13 mm)
 - Skylight window, 0.5" (13 mm)
 - Rear window, 0.5" (13 mm)
- Work lights, 11 LED type



OPTIONAL EQUIPMENT

- Arms
 - Feller Buncher, 13'0" (3960 mm) straight with tree deflector
 - Harvester, 13'8" (4165 mm) non-telescopic
- Booms
 - 14'2" (4320 mm) Standard length
 - 16'1" (4902 mm) Extended length
- Carrier rollers
- Fire suppression system, automatic dry chemical
- Heater, block, 120V
- Heater, charge oil relief
- Heater, Espar® fuel-fired jacket water and hydraulic oil pre-heater
- Hydraulic systems
 - High speed disc saw
 - Bar saw
 - Bar saw with lateral tilt
 - Combination bar saw/high speed disc saw
- Harvesting/Processing Head, 4
- Oil cooler, pump drive
- Seat, KAB vented and heated
- Track shoes - 28" (700 mm) single grouser



ATTACHMENT OPTIONS

- Komatsu XA233-2 bar saw
- Komatsu harvesting heads
- 21-22" high speed disc saws



Note: All comparisons and claims of improved performance made herein are made with respect to the prior Komatsu model unless otherwise specifically stated.